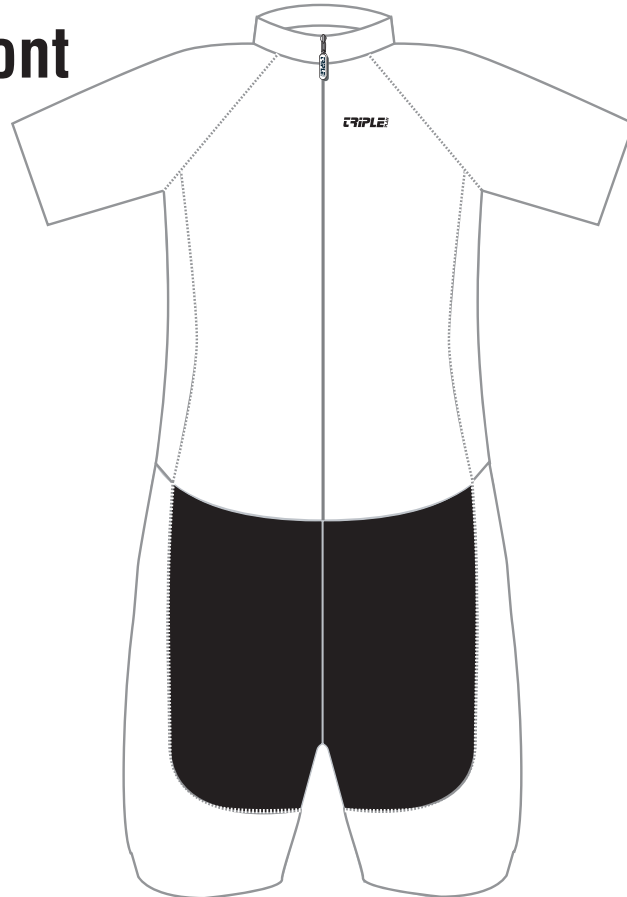


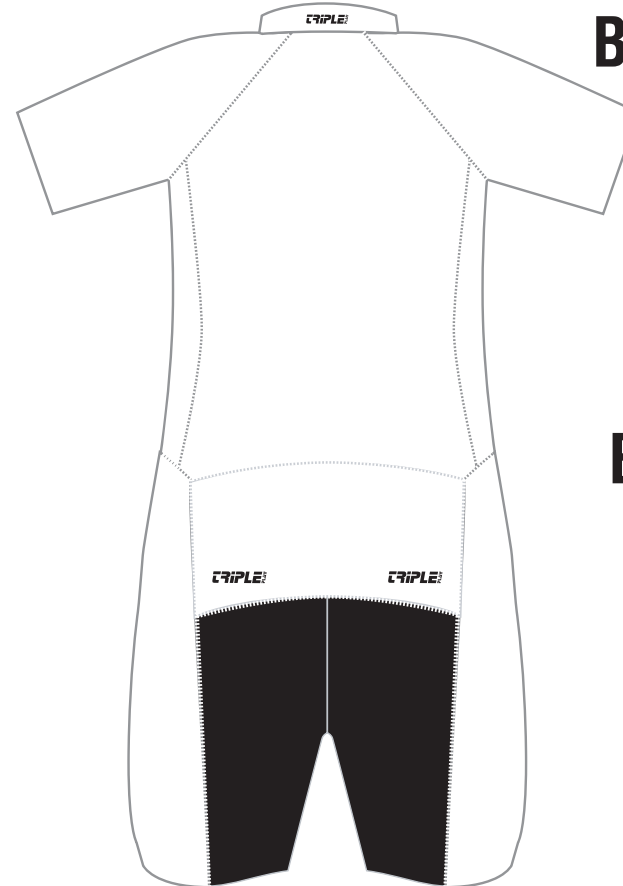


# Half Wrap Skin Suit

Front



Back



**Please Note:  
Black Area Can  
Not Be Printed**

**Artwork Size:**

Only one set of artwork is created to print each garment's full size range; XS to 2XL.

**Tripleplay Logos:**

The location of the Triple Play logos on each garment are set according to Triple Play brand standards. Please do not move or resize them.

**Vector Graphics:**

Vector art is preferred for logos, text and most flat graphics in order to produce smooth edges. If your artwork cannot be provided in vector format, tracing charges may apply. Vector art files are generally an AI or EPS file.

**Email Attachments:**

Attachments greater than 10MB in size will be rejected by our email servers. If your files are larger than this, you can either send them via CD or DVD or contact us for other ways to send us the files.  
Email : [sales@tripleplay.com.au](mailto:sales@tripleplay.com.au)

**Print Colours:**

The colours on-screen may vary from the finished product. It should be used as a reference only. Due to the physical differences between offset (on paper) and sublimation (on fabric) printing processes, colours in the final print may not necessarily match the Pantone references.